



# MTPredictor™

Software & training for Risk/Reward trading with Elliott wave

## PDF Help file for Unfair Advantage 2.9.1

Web: [www.mtpredictor.com](http://www.mtpredictor.com)

Email: [Sales@MTPredictor.com](mailto:Sales@MTPredictor.com)

Int'l: +44 (0) 11 7985 4397

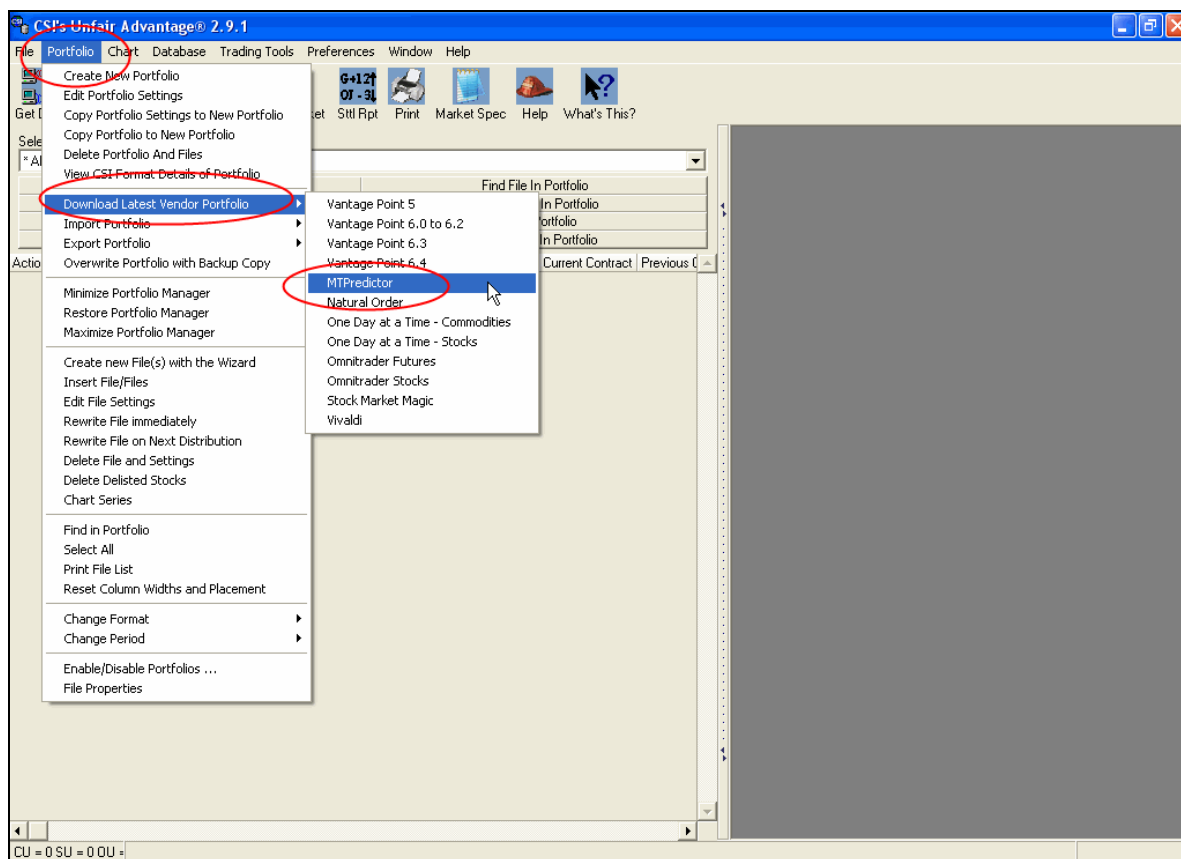
from UK (freephone): 0800 107 5271

from US (toll free): (800) 856-1582

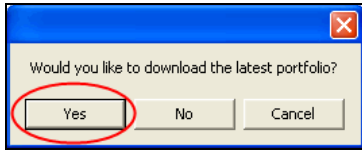
13 Mar 2006

In this help file I will show you how to set-up Unfair Advantage 2.9.1 from CSI Data (<http://www.csidata.com/>) with the pre-built MTPredictor portfolio for US Futures.

First please open Unfair Advantage (UA), then select **Portfolio** and then **Download latest Vendor Portfolio**, then **MTPredictor**.

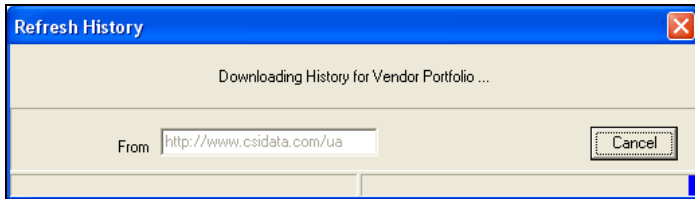


Once you have done that you will be asked if you wish to download the latest portfolio:

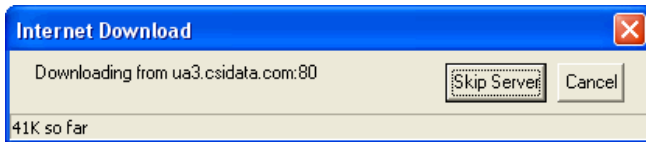


Please say **Yes** to this.

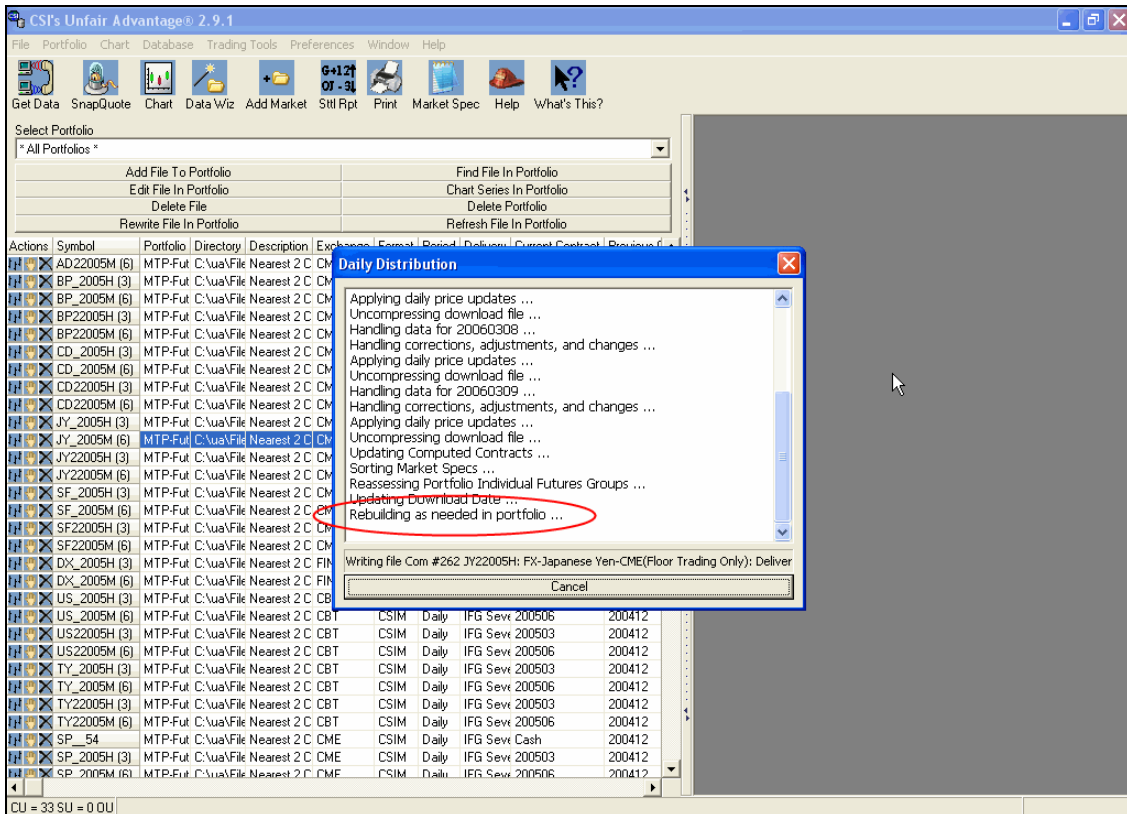
Once you have done this, the portfolio will start to download:



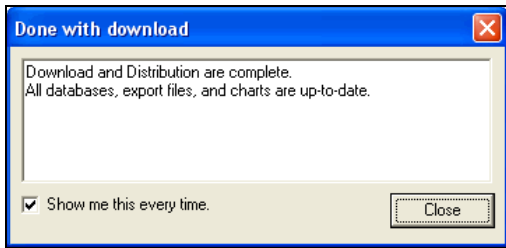
And:



Once this is complete UA will update its database and then “re-build” this portfolio for you:



Once this is complete you will be told that the download and distribution is complete:

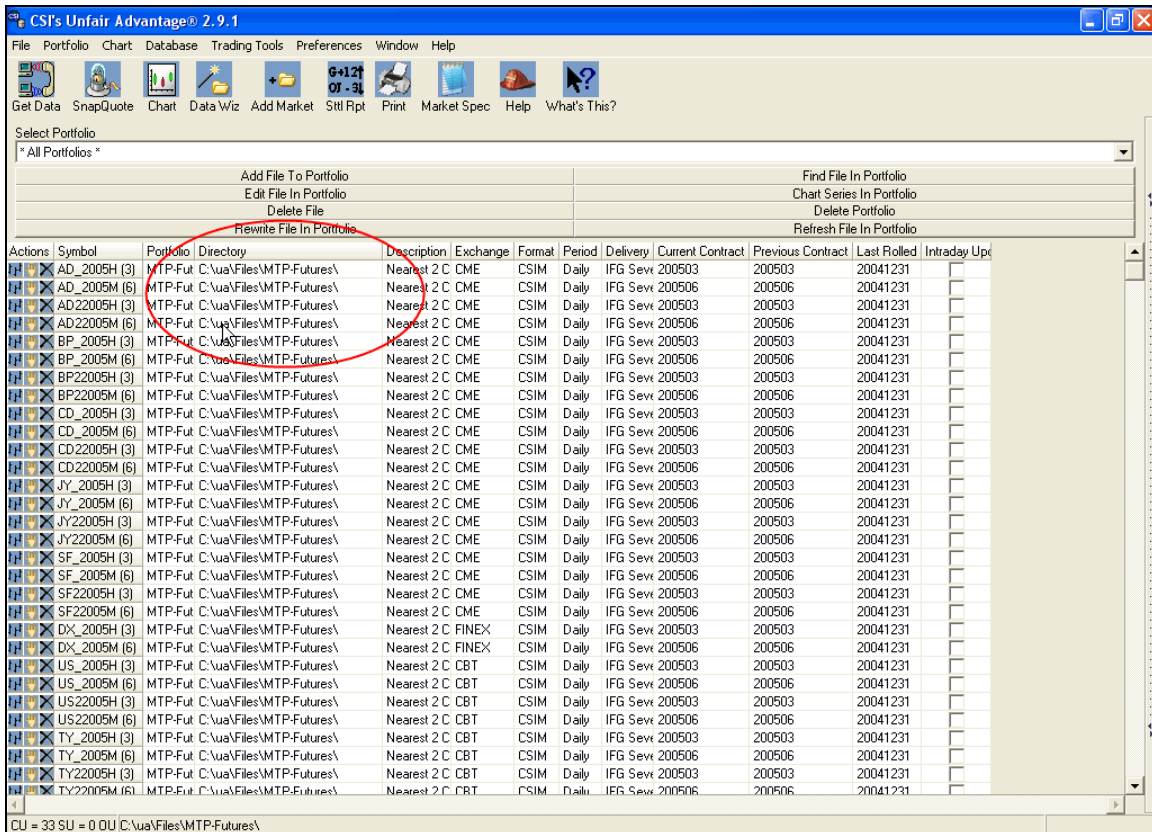


And

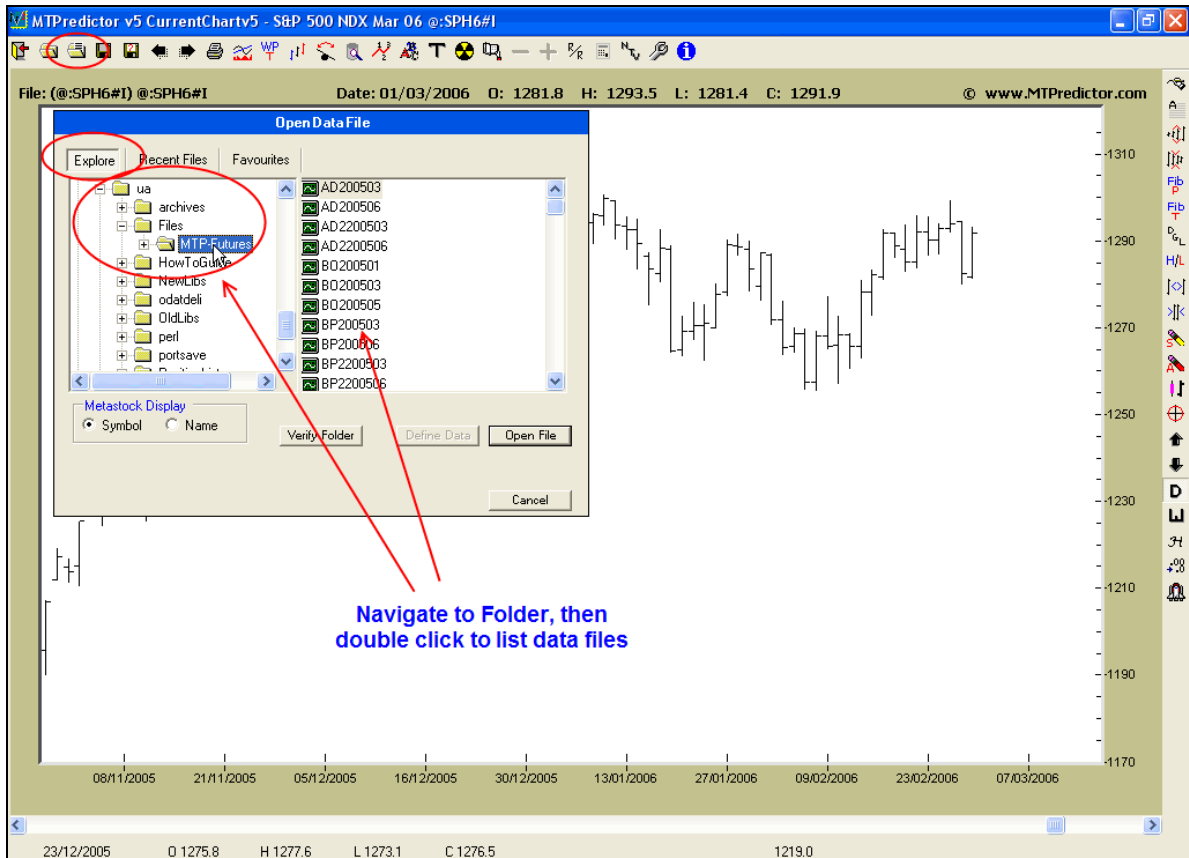


And that is it – you now have the MTPredictor portfolio in UA and the data files have been “exported” onto your hard drive ready to be read by MTPredictor - all very quick and simple

Next we have to load these into MTPredictor, but before we do this, please note the location of these data files on your hard drive – which is C:\UAFiles\MTP-Futures. We will need that location when in MTPredictor:

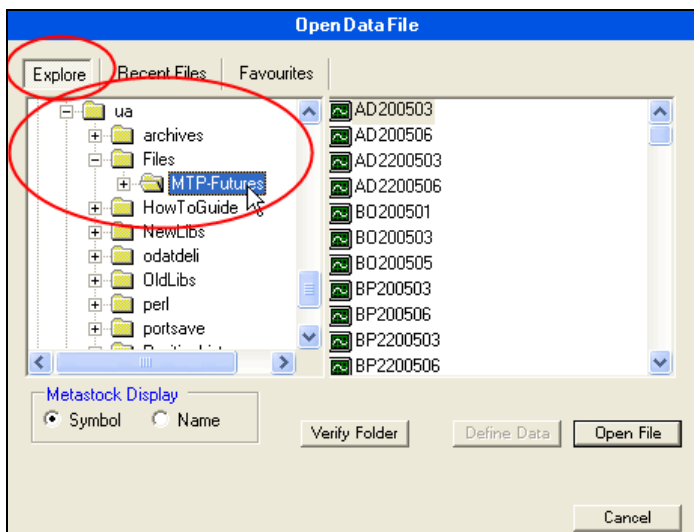


OK now let's open MTPredictor and then use the **Open Data File** module to locate these files on your hard drive:

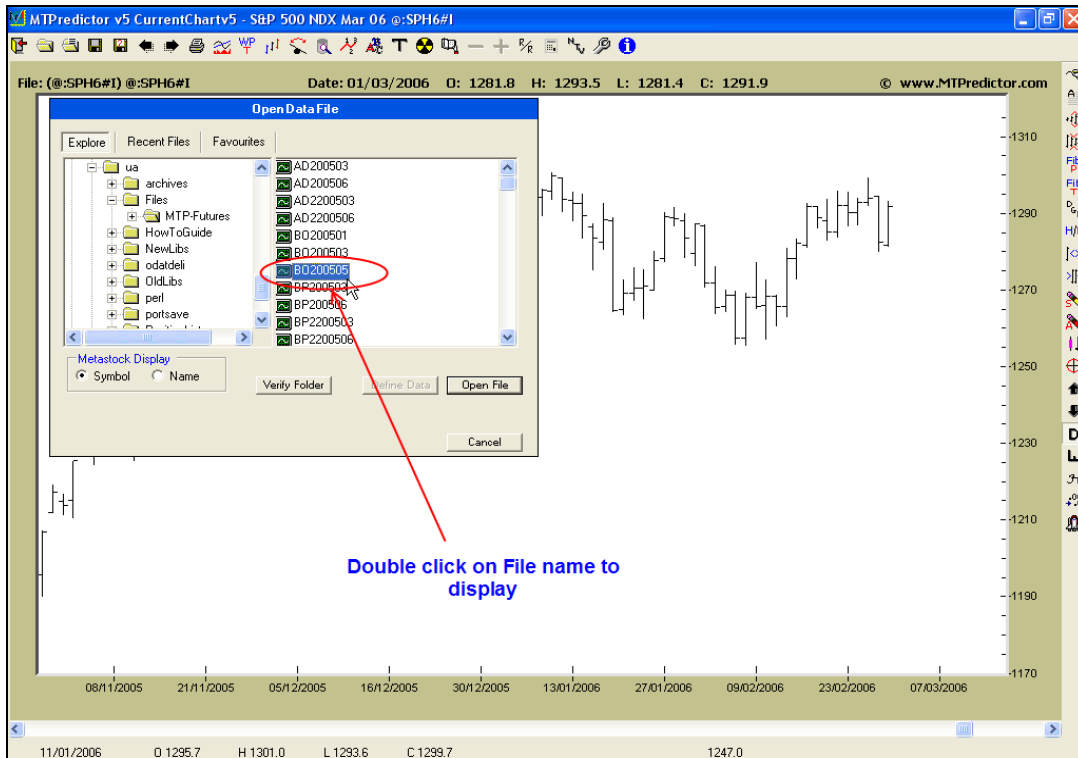


As you can see from the picture above I have used the **Explore** tab in the **Open Data File** module to drill down to **C:\UAVFiles\MTP-Futures**, this is the location where the data files were saved from UA (please see the last page).

Here is a close up of that window:



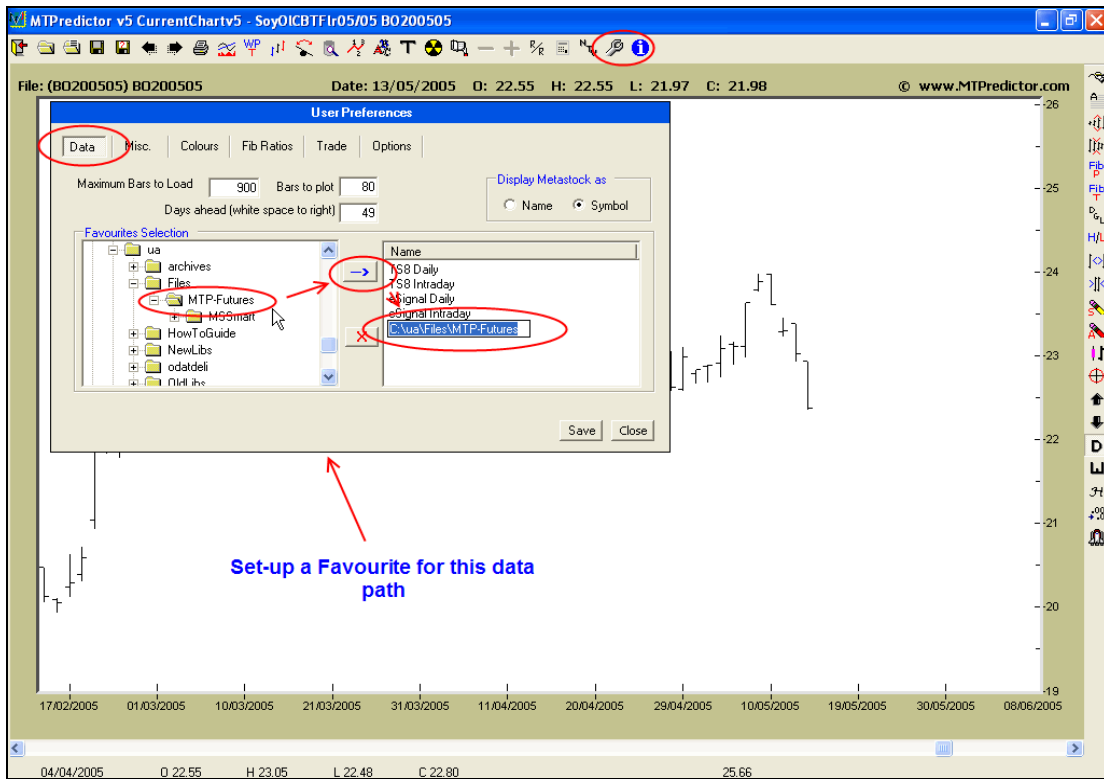
As you can see, the data files will then be displayed in the right hand pain of this window, so all you have to do now is double click on one of them to display the require chart:



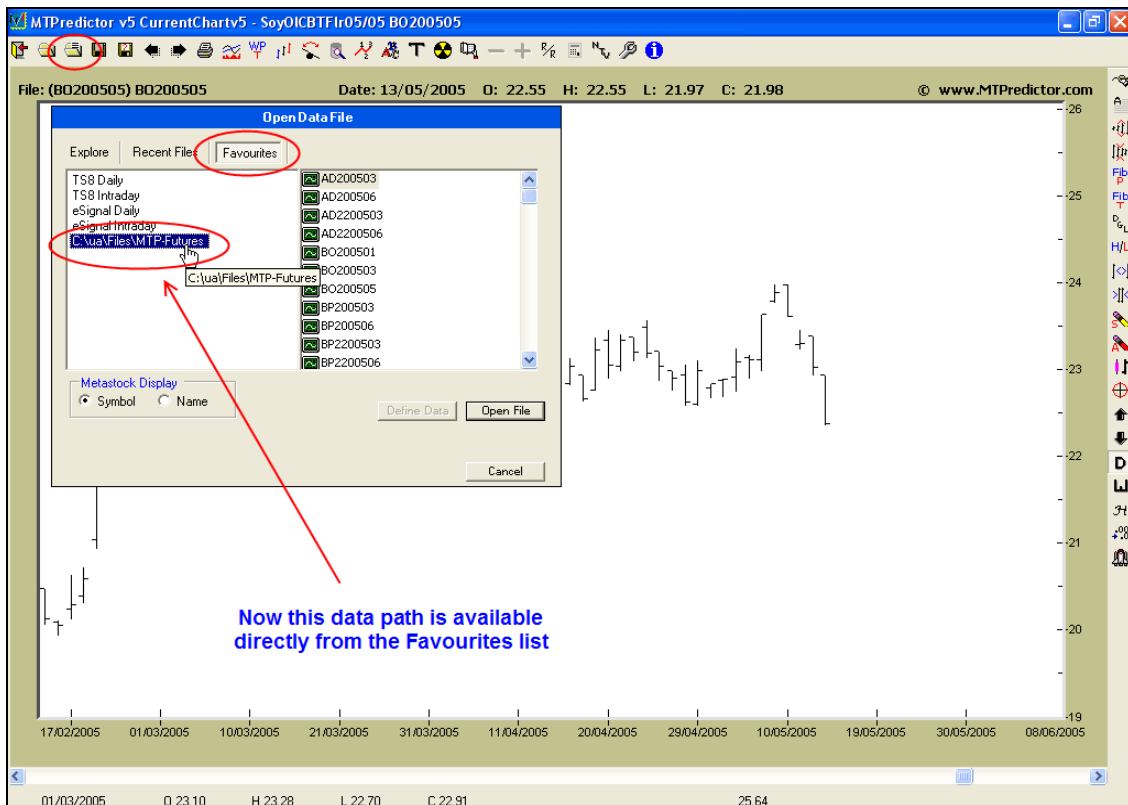
Then the chart will be drawn for you:



To make things easier for you, you can set up this data file location (**C:\UAFiles\WTP-Futures**) as a Favourite:

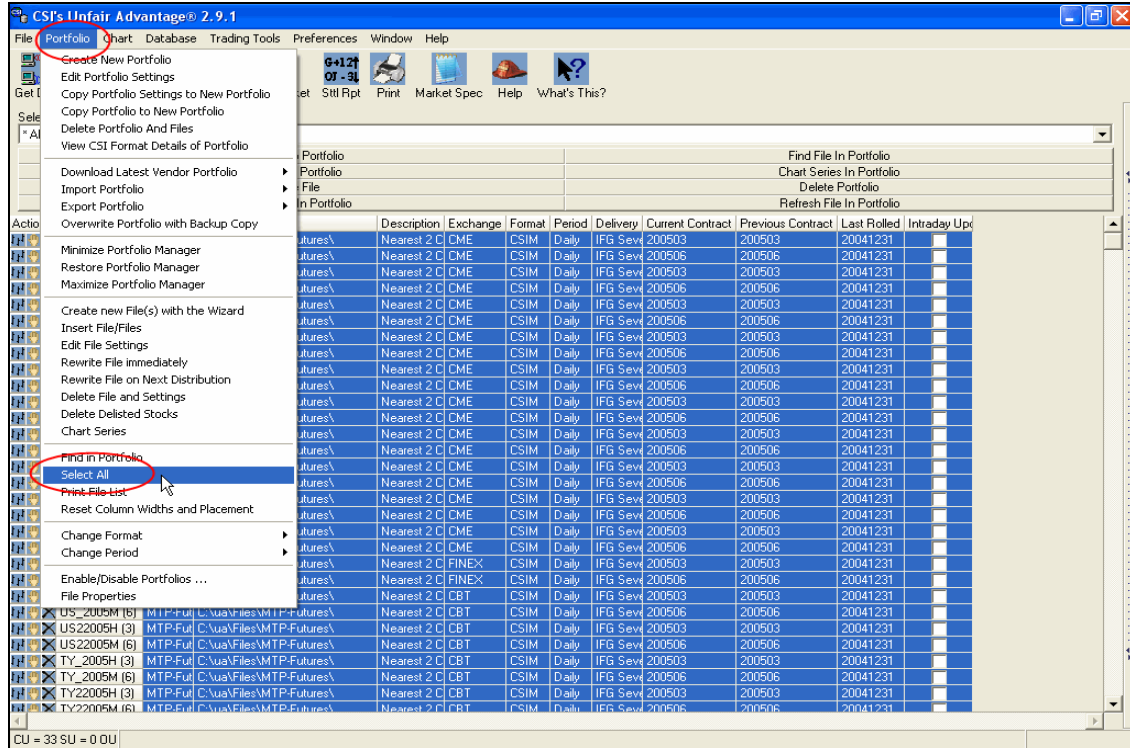


This will then be displayed in the **Favourites** tab:

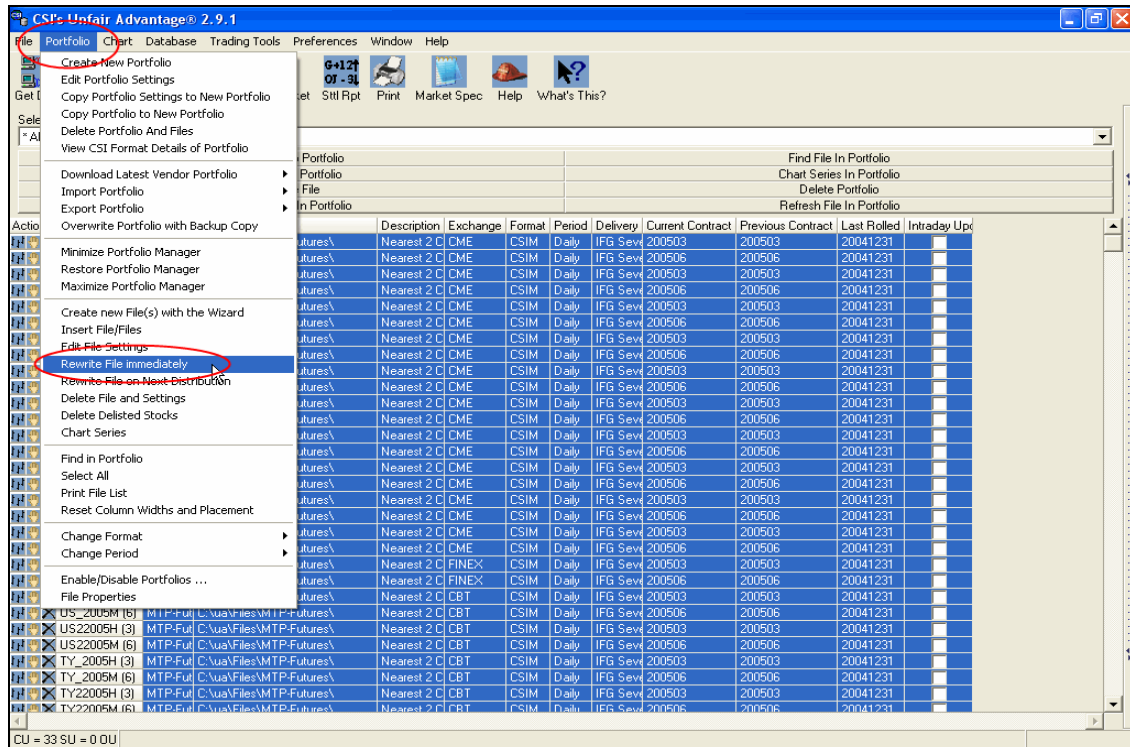


As you can see, it is extremely easy to load these data files into MTPredictor once the Portfolio has been created and then updated in UA.

The only issue that can arise is that the Portfolio in UA needs to be refreshed, to do this please first **select all** the files in the Portfolio in UA, see how they all go blue:

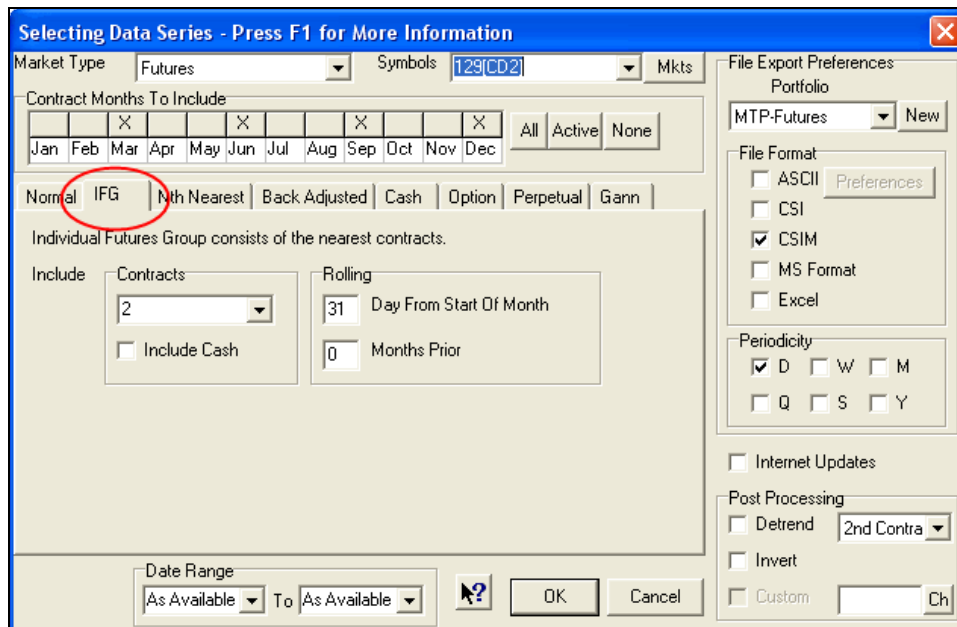


Then chose to **Rewrite File Immediately**, this will rebuild and refresh all the data files.



These will then be all re-written on your hard drive. To see the refreshed data files please re-load a data file in MTPredictor.

Please note: I have used the ***IFG (Individual Futures Group)*** in UA to build this Portfolio,



This means that as time goes on new contracts will automatically be added to the Portfolio and the old ones removed. This will make keeping this portfolio current very easy indeed.

Thanks and good trading . . .

Steve Griffiths  
 Managing Director and developer of MTPredictor  
**MTPredictor Ltd.**  
[www.mtpredictor.com](http://www.mtpredictor.com)

U.S. Government Required Disclaimer - Commodity Futures Trading Commission Futures and Options trading has large potential rewards, but also large potential risk. You must be aware of the risks and be willing to accept them in order to invest in the futures and options markets. Don't trade with money you can't afford to lose. This is neither a solicitation nor an offer to Buy/Sell futures, stocks or options on the same. No representation is being made that any account will or is likely to achieve profits or losses similar to those discussed on this web site. The past performance of any trading system or methodology is not necessarily indicative of future results.

CFTC RULE 4.41 - HYPOTHETICAL OR SIMULATED PERFORMANCE RESULTS HAVE CERTAIN LIMITATIONS. UNLIKE AN ACTUAL PERFORMANCE RECORD, SIMULATED RESULTS DO NOT REPRESENT ACTUAL TRADING. ALSO, SINCE THE TRADES HAVE NOT BEEN EXECUTED, THE RESULTS MAY HAVE UNDER-OR-OVER COMPENSATED FOR THE IMPACT, IF ANY, OF CERTAIN MARKET FACTORS, SUCH AS LACK OF LIQUIDITY. SIMULATED TRADING PROGRAMS IN GENERAL ARE ALSO SUBJECT TO THE FACT THAT THEY ARE DESIGNED WITH THE BENEFIT OF HINDSIGHT. NO REPRESENTATION IS BEING MADE THAT ANY ACCOUNT WILL OR IS LIKELY TO ACHIEVE PROFIT OR LOSSES SIMILAR TO THOSE SHOWN. NO REPRESENTATION IS BEING MADE THAT ANY ACCOUNT WILL, OR IS LIKELY TO ACHIEVE PROFITS OR LOSSES SIMILAR TO THOSE DISCUSSED WITHIN THIS SITE, SUPPORT AND TEXTS. OUR COURSE(S), PRODUCTS AND SERVICES SHOULD BE USED AS LEARNING AIDS ONLY AND SHOULD NOT BE USED TO INVEST REAL MONEY. IF YOU DECIDE TO INVEST REAL MONEY, ALL TRADING DECISIONS SHOULD BE YOUR OWN.

**MTPredictor, Isolation Approach, Techniques Curve & MTPredictor reports are trademarks of MTPredictor Ltd. All other trademarks and brands may be the property of their respective owners. © MTPredictor Ltd. 2001 - 2006. All rights reserved.**

Trade at your own risk. There is risk of loss when trading speculative markets. This training and education newsletter is for information and educational purposes only and should not be considered trading recommendations. You should seek appropriate advice from your broker, or licensed investment advisor, before taking any action. All trading decisions are your own sole responsibility, and MTPredictor or S. E. Griffiths or A. P. Beckwith cannot be held responsible for any losses that are incurred as a result. Past performance is no guarantee of future results. © MTPredictor - [www.MTPredictor.com](http://www.MTPredictor.com) 2001 - 2006.