



Software & training for Risk/Reward trading with Elliott wave

MTPredictor Help File – ShareScope Data

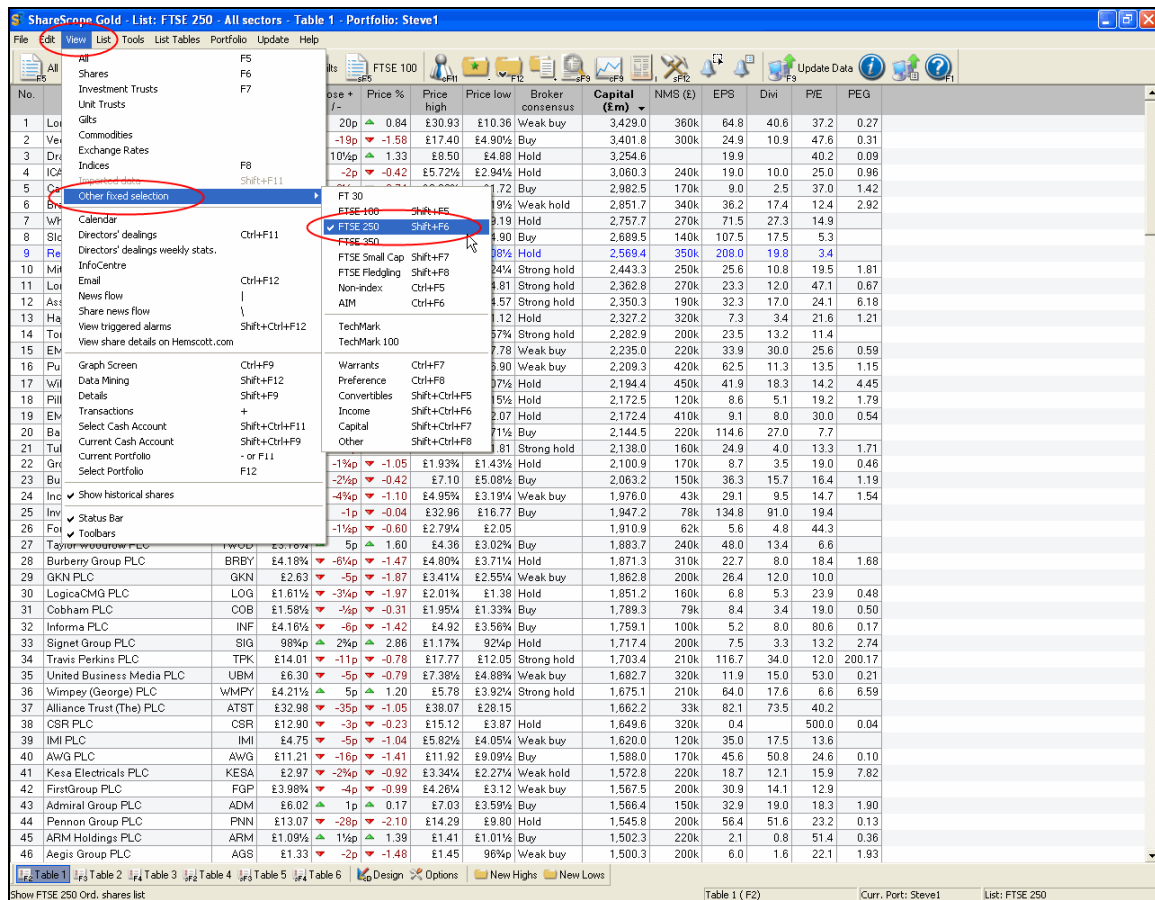
Web: www.mtpredictor.com
 Email: sales@mtpredictor.net
 US: Matt.Bowen@mtpredictor.net
 from UK (freephone): 0800 107 5271
 from US (toll free): (800) 856-1582

13 June 2006

ShareScope

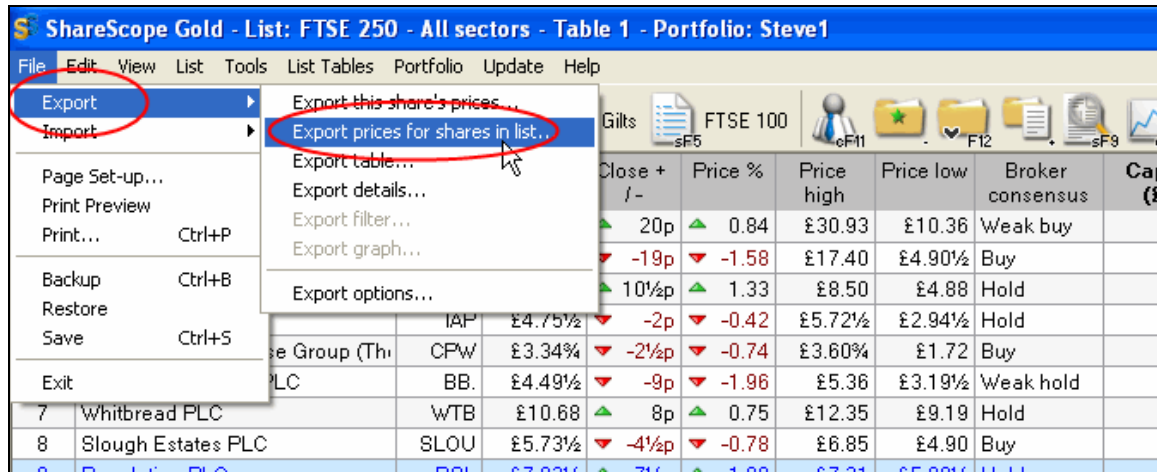
ShareScope is a UK based data vendor mainly supplying data on UK shares. This help file will show you how to **Export** a list of shares into ASCII format that can then be read by MTPredictor. Please note that once set-up this process is very easy indeed on a day by day basis.

OK, first we need to choose the list we wish to **Export**:



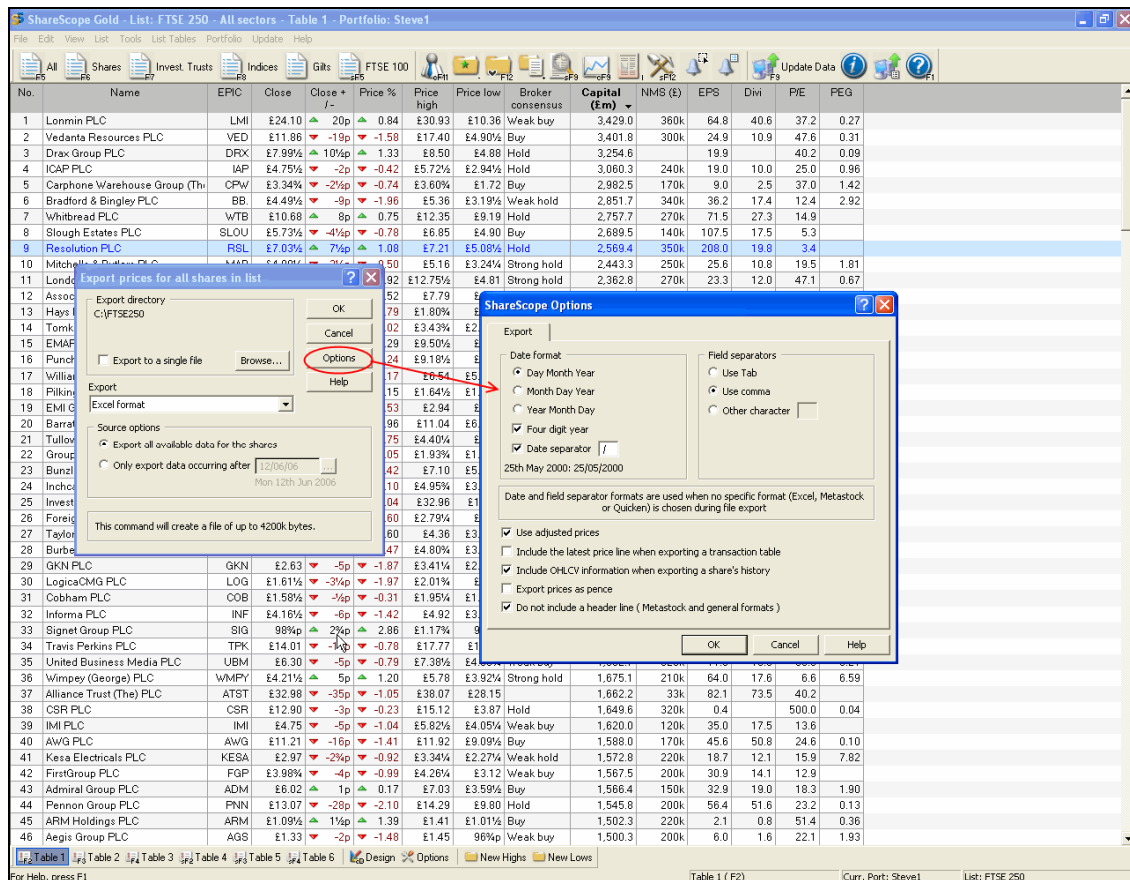
In ShareScope this is very easy indeed. All you need to do is select **View**, then **Other Fixed Selections** then choose the list you wish – for example the **FTSE 250** (or FTSE100). You'll then see this list displayed in ShareScope.

Now we need to Export this list into ASCII data files:

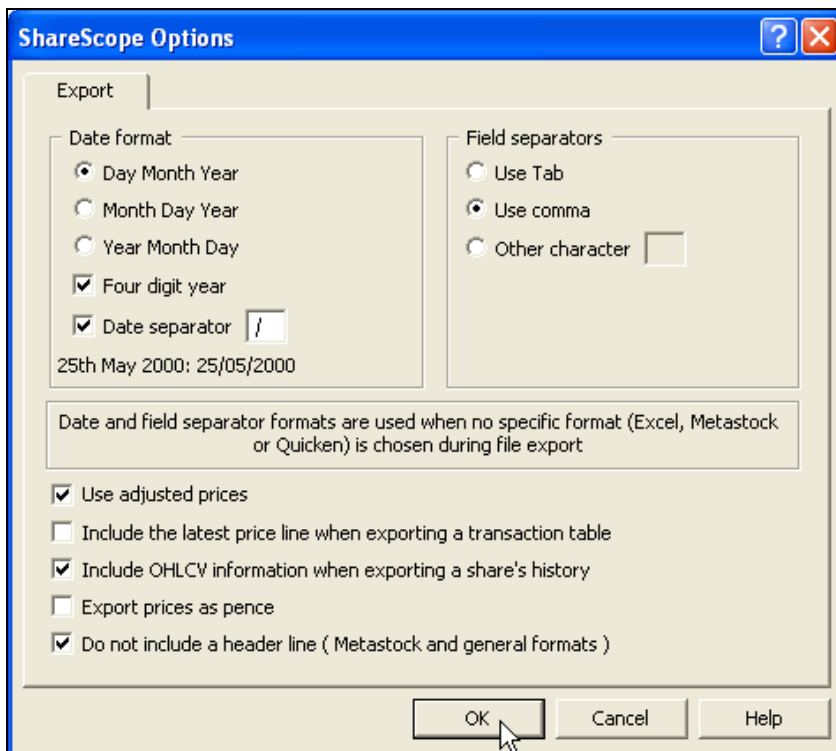


For this choose **Files**, then **Export** then **Export prices for shares in list**.

A menu will then appear.



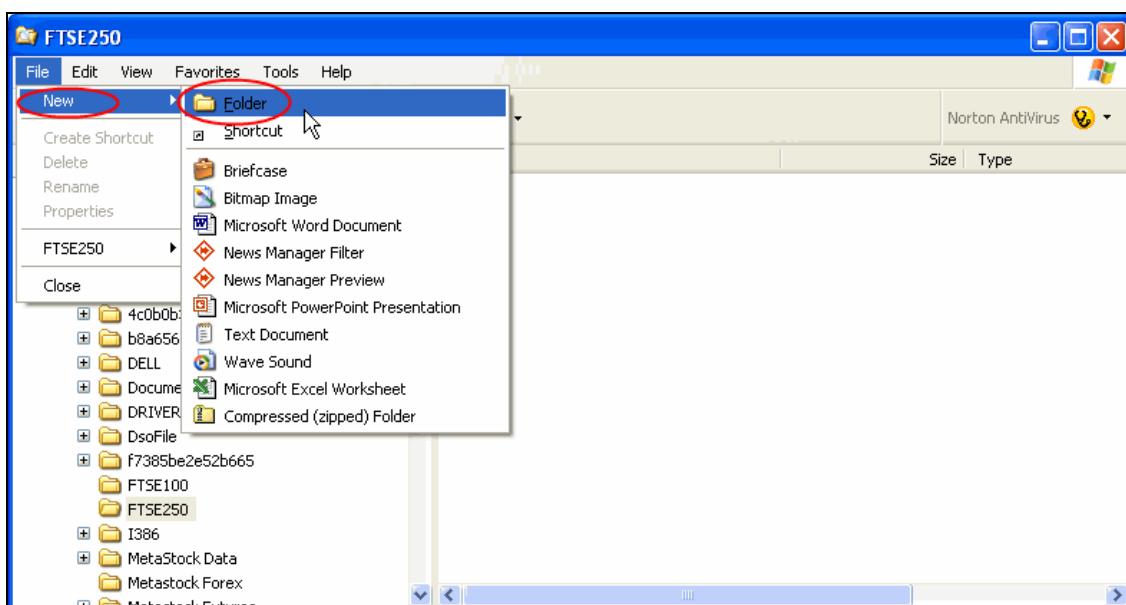
Here choose **Options**, and this window will appear:



I suggest you choose the options and selections I have in the picture above.

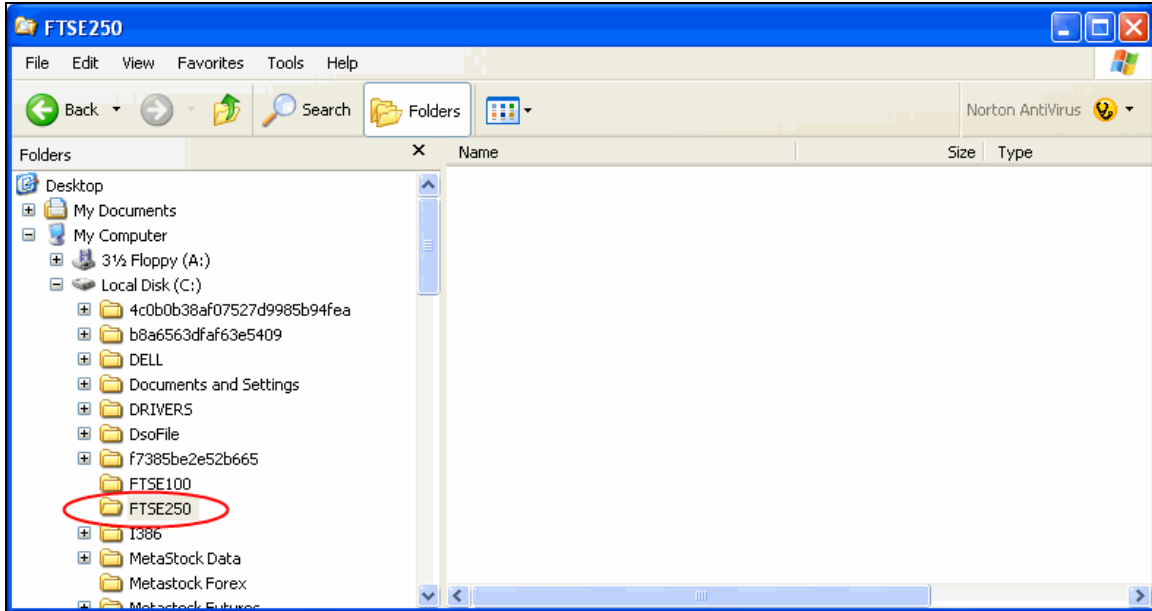
Because we are going to be exporting these shares into a folder on your hard drive, we now need to make sure that that folder has been created on your hard drive ready for the shares to be saved in.

To do this open up **Windows Explorer** then create a new folder:

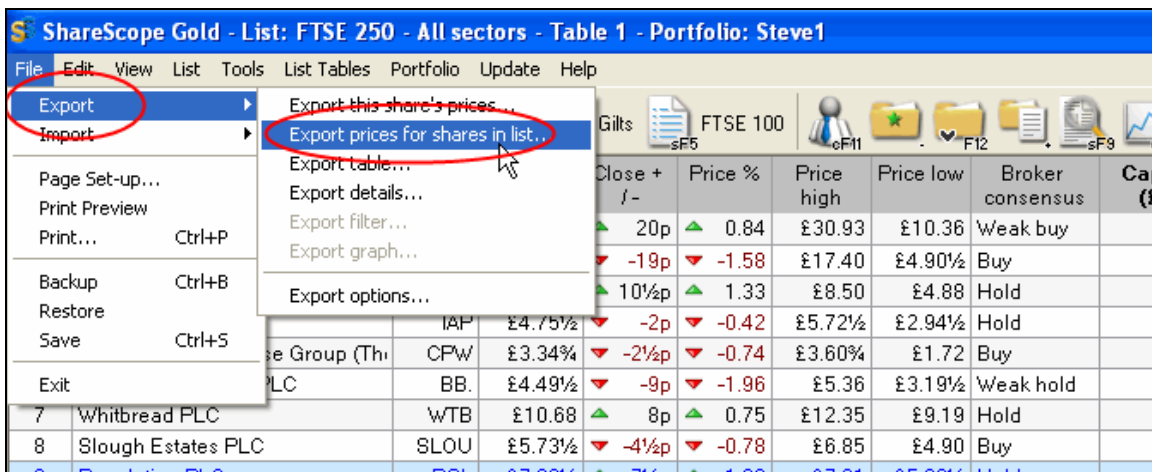


In this example I have created this under the C:\ drive and called it FTSE250, but the choice here is up to you.

Once that has been created:



We can return to ShareScope and perform the actual data **Export**.



As before, please choose **Files**, then **Export** then **Export prices for shares in list**.

Continued on the next page.....

And this window will appear:

The screenshot shows the ShareScope Gold interface with a list of 46 stocks. Two dialog boxes are overlaid on the list:

- Browse for Folder:** A file explorer window showing the local disk (C:). The folder 'FTSE250' is selected under the 'Local Disk (C:)' drive.
- Export prices for all shares in list:** A dialog box with the following options:
 - Export directory: C:\FTSE100
 - Export to a single file: (The 'Browse...' button next to it is circled in red.)
 - Excel format: [Dropdown menu]
 - Source options:
 - Export all available data for the shares
 - Only export data occurring after [Date selector: 11/05/06]

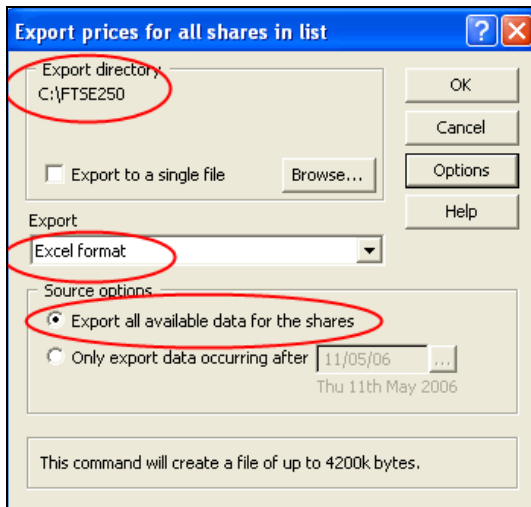
The background table lists the following data for the first few rows:

No.	Name	EPIC	Close	Close + / -	Price %	Price high	Price low	Broker consensus	Capital (£m)	NMS (£)	EPS	Divi	P/E	PEG
1	Lonmin PLC	LMI	£24.10	▲ 20p	▲ 0.84	£30.93	£10.36	Weak buy	3,429.0	360k	64.8	40.6	37.2	0.27
2	Vedanta Resources PLC	VED	£11.86	▼ -19p	▼ -1.58	£17.40	£4.90	Buy	3,401.8	300k	24.9	10.9	47.6	0.31
3	Drax Group PLC	DRX	£7.99	▲ 10½p	▲ 1.33	£8.50	£4.88	Hold	3,254.6		19.9		40.2	0.09
4	ICAP PLC	IAP	£4.75	▼ -2p	▼ -0.42	£5.72	£2.94	Hold	3,060.3	240k	19.0	10.0	25.0	0.96
5	Carphone Warehouse Group (Th	CPW	£3.34	▼ -2½p	▼ -0.74	£3.60	£1.72	Buy	2,982.5	170k	9.0	2.5	37.0	1.42
6	Bradford & Bingley PLC	BB	£4.49	▼ -9p	▼ -1.96	£5.36	£3.19	Weak hold	2,851.7	340k	36.2	17.4	12.4	2.92
7	Whitbread PLC	WTB	£10.68	▲ 8p	▲ 0.75	£12.35	£9.19	Hold	2,757.7	270k	71.5	27.3	14.9	
8	Slough Estates PLC	SLOU	£5.73	▼ -4½p	▼ -0.78	£6.85	£4.90	Buy	2,689.5	140k	107.5	17.5	5.3	
9	Resolution PLC	RSL	£7.03	▲ 7½p	▲ 1.08	£7.21	£5.08	Hold	2,569.4	350k	208.0	19.8	3.4	
10	Mitchells & Butlers PLC	MAR	£4.98	▼ -2½p	▼ -0.50	£5.16	£3.24	Strong hold	2,443.3	250k	25.6	10.8	19.5	1.81
11	Lon		▲ 0.92	▲ 12.75%	▲ 4.81	▲ 12.75%	▲ 4.81	Strong hold	2,362.8	270k	23.3	12.0	47.1	0.67
12	Ass		▲ 0.52	▲ 7.79%	▲ 4.57	▲ 7.79%	▲ 4.57	Strong hold	2,350.3	190k	32.3	17.0	24.1	6.18
13	Hay		▼ -0.79	▼ -1.02	▼ -1.02	▼ -1.02	▼ -1.02					3.4	21.6	1.21
14	Ton		▲ 0.29	▲ 0.29	▲ 0.29	▲ 0.29	▲ 0.29					13.2	11.4	
15	EM		▲ 0.24	▲ 0.24	▲ 0.24	▲ 0.24	▲ 0.24					30.0	25.6	0.59
16	Pun		▼ -0.17	▼ -0.17	▼ -0.17	▼ -0.17	▼ -0.17					11.3	13.5	1.15
17	Will		▲ 0.15	▲ 0.15	▲ 0.15	▲ 0.15	▲ 0.15					18.3	14.2	4.45
18	Pilk		▼ -1.53	▼ -1.53	▼ -1.53	▼ -1.53	▼ -1.53					5.1	19.2	1.79
19	EMI		▲ 1.96	▲ 1.96	▲ 1.96	▲ 1.96	▲ 1.96					8.0	30.0	0.54
20	Bar		▼ -0.75	▼ -0.75	▼ -0.75	▼ -0.75	▼ -0.75					27.0	7.7	
21	Tull		▼ -1.05	▼ -1.05	▼ -1.05	▼ -1.05	▼ -1.05					4.0	13.3	1.71
22	Gro		▼ -0.42	▼ -0.42	▼ -0.42	▼ -0.42	▼ -0.42					3.5	19.0	0.46
23	Bun		▼ -1.10	▼ -1.10	▼ -1.10	▼ -1.10	▼ -1.10					15.7	16.4	1.19
24	Inch		▼ -0.04	▼ -0.04	▼ -0.04	▼ -0.04	▼ -0.04					9.5	14.7	1.54
25	Inve		▼ -0.60	▼ -0.60	▼ -0.60	▼ -0.60	▼ -0.60					91.0	19.4	
26	For		▲ 1.60	▲ 1.60	▲ 1.60	▲ 1.60	▲ 1.60					4.8	44.3	
27	Tay		▼ -1.47	▼ -1.47	▼ -1.47	▼ -1.47	▼ -1.47					8.0	18.4	1.68
28	Bur		▼ -1.87	▼ -1.87	▼ -1.87	▼ -1.87	▼ -1.87					12.0	10.0	
29	GKN PLC	GKN	£2.03	▼ -3p	▼ -1.97	£1.95	£1.33	Buy	1,789.3	79k	8.4	3.4	19.0	0.50
30	LogicaCMG PLC	LOG	£1.61	▼ -3½p	▼ -0.31	£1.95	£1.33	Buy	1,759.1	100k	5.2	8.0	80.6	0.17
31	Cobham PLC	COB	£1.58	▼ -4p	▼ -0.31	£1.95	£1.33	Buy	1,717.4	200k	7.5	3.3	13.2	2.74
32	Infoma PLC	INF	£4.16	▼ -6p	▼ -1.42	£4.92	£3.56	Buy	1,703.4	210k	116.7	34.0	12.0	200.17
33	Signet Group PLC	SIG	98p	▲ 2p	▲ 2.86	£1.17	£0.92	Hold	1,882.7	320k	11.9	15.0	53.0	0.21
34	Travis Perkins PLC	TPK	£14.01	▼ -11p	▼ -0.78	£17.77	£12.05	Strong hold	1,675.1	210k	64.0	17.6	6.6	6.59
35	United Business Media PLC	UBM	£6.30	▼ -5p	▼ -0.79	£7.38	£4.88	Weak buy	1,662.2	33k	82.1	73.5	40.2	
36	Wimpey (George) PLC	WMFY	£4.21	▲ 5p	▲ 1.20	£5.78	£3.92	Strong hold	1,649.6	320k	0.4		500.0	0.04
37	Alliance Trust (The) PLC	ATST	£32.98	▼ -35p	▼ -1.05	£38.07	£28.15		1,620.0	120k	35.0	17.5	13.6	
38	CSR PLC	CSR	£12.90	▼ -3p	▼ -0.23	£15.12	£3.87	Hold	1,588.0	170k	45.6	50.8	24.6	0.10
39	IMI PLC	IMI	£4.75	▼ -5p	▼ -1.04	£5.82	£4.05	Weak buy	1,572.8	220k	18.7	12.1	15.9	7.82
40	AWG PLC	AWG	£11.21	▼ -16p	▼ -1.41	£11.92	£9.09	Buy	1,567.5	200k	30.9	14.1	12.9	
41	Kesa Electricals PLC	KESA	£2.97	▼ -2½p	▼ -0.92	£3.34	£2.27	Weak hold	1,566.4	150k	32.9	19.0	18.3	1.90
42	FirstGroup PLC	FGP	£3.98	▼ -4p	▼ -0.99	£4.26	£3.12	Weak buy	1,545.8	200k	56.4	51.6	23.2	0.13
43	Admiral Group PLC	ADM	£6.02	▲ 1p	▲ 0.17	£7.03	£3.59	Buy	1,502.3	220k	2.1	0.8	51.4	0.36
44	Pennon Group PLC	PNN	£13.07	▼ -28p	▼ -2.10	£14.29	£9.80	Hold	1,500.3	200k	6.0	1.6	22.1	1.93
45	ARM Holdings PLC	ARM	£1.09	▲ 1½p	▲ 1.39	£1.41	£1.01	Buy						
46	Aegis Group PLC	AGS	£1.33	▼ -2p	▼ -1.48	£1.45	96p	Weak buy						

Please use the **browse** button to choose the folder on your hard drive that you have just created - in this example we called it **C:\FTSE250**.

Continued on the next page.....

Now we have to set up just last few **Export** options:



In particular, please choose the **Excel Format** as shown above:

Now you can click on OK and the export will start:

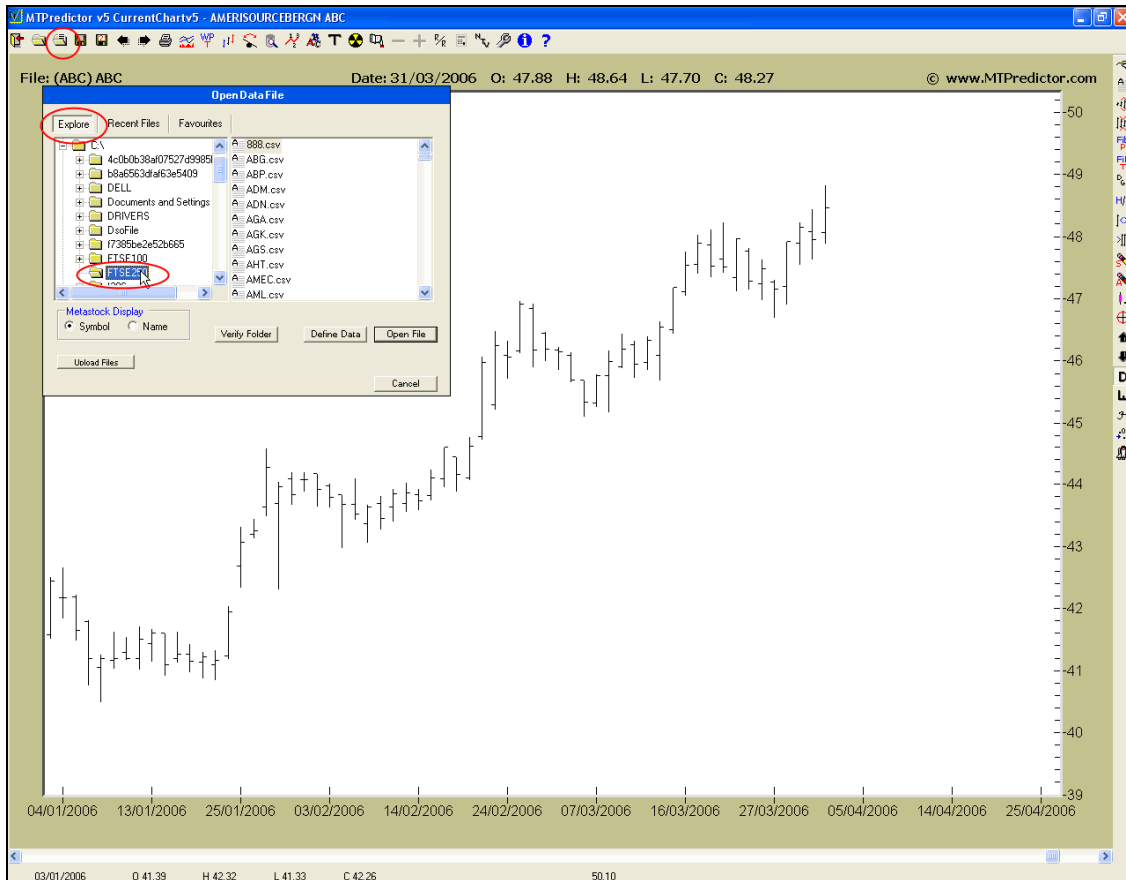


When finished you will have created 251 ASCII data files on your hard drive in the **C:\FTSE250** folder:



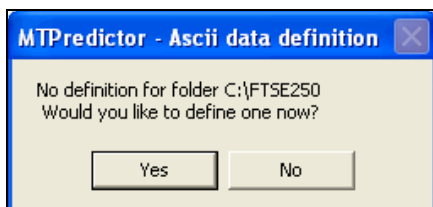
Now we need to turn to MTPredictor.....

Once in MTPredictor please choose the **Open Data File** option, and then click on the **Explore** Tab:



Once there, please navigate down to find the C:\FTSE250 folder. As you can see from the picture above this contains your list of the 251 ASCII data files. All you have to do now is **double click** on one of these data files to load the chart.

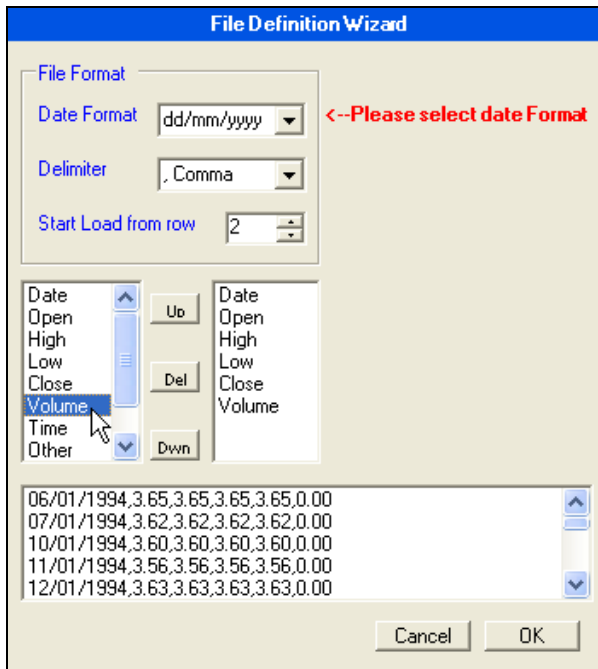
However, the first time you do this you will be asked to set up the **ASCII Data Definition**. Don't panic as this is only a one-time operation. Once you have done this MTPredictor will remember the settings and therefore know how to open these data files automatically for you.



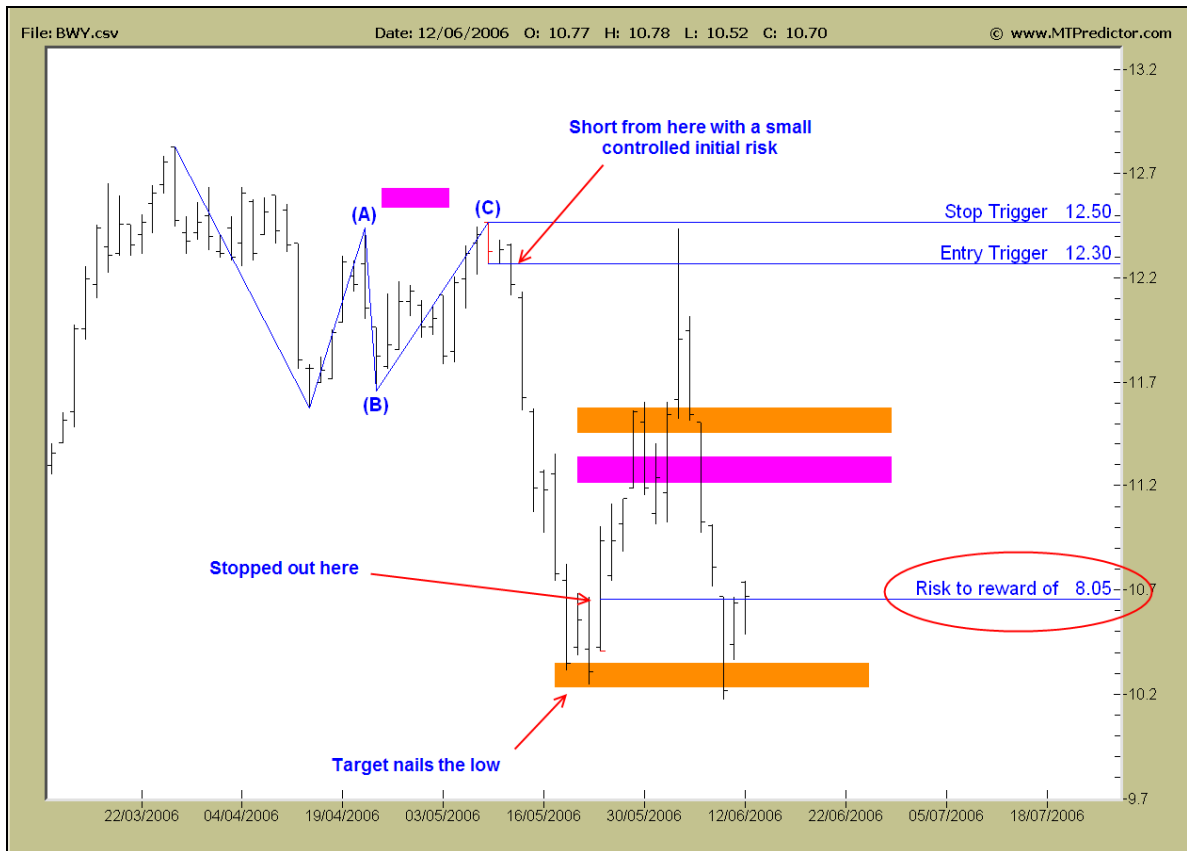
There is help available on this at: <http://www.mtpredictor.com/pricing/EODHelp1.html>

Continued on the next page.....

Here is the **ASCII Data Definition** wizard:



For this, please choose the options as shown in the picture above as these correspond to the format of your ASCII data files (from earlier in this help file), part of which you can see in the bottom of the window. Once complete, a chart will then plot:



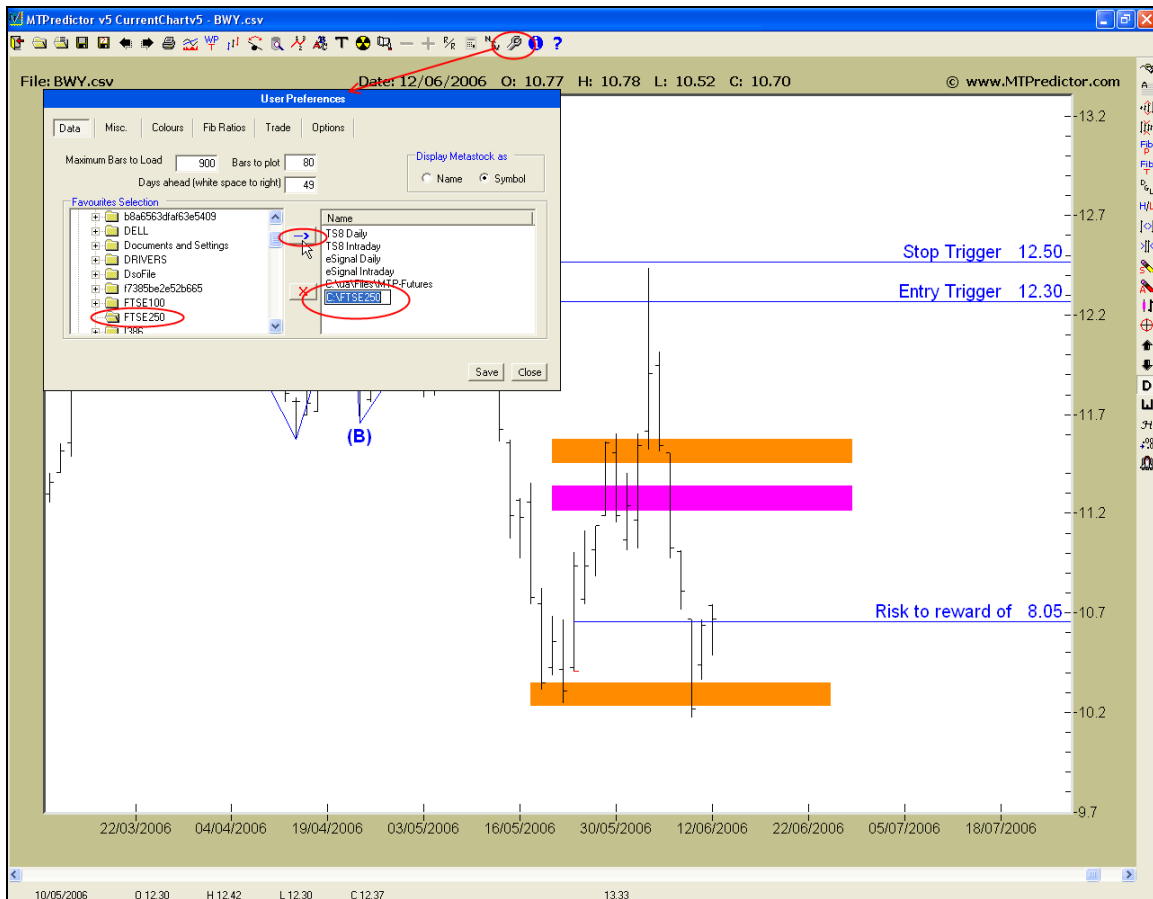
You can then perform all the normal MTPredictor analysis and scans on this list of data files.

Please note: although this may seem quite complicated and involved, you are only required to perform this once. Because one set-up, everything will be remembered so that all you have to do is

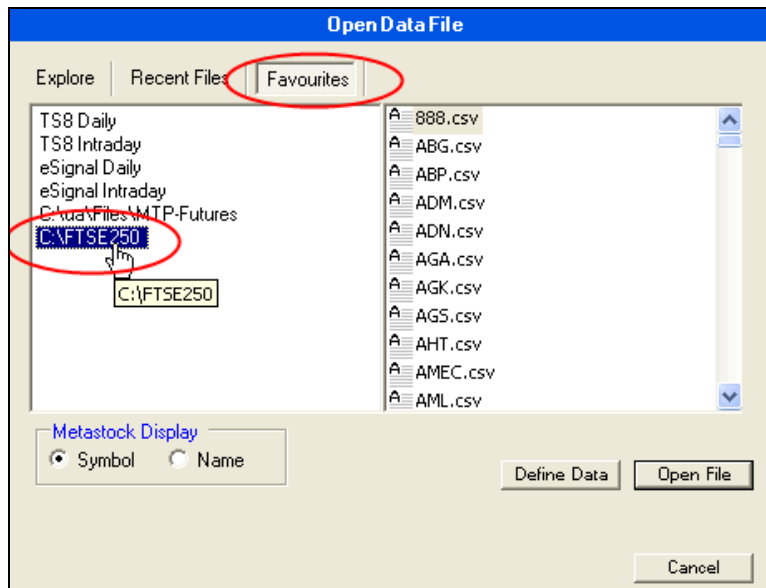
- First **update** your data in ShareScope, then
- **export** the list from ShareScope, then
- **Open** a data file in MTPredictor.

It is that's easy

That are also some other tricks you can use to help in MTPredictor. For example, you can set-up your C:\FTSE folder as a **favourite**:



This will then allow access to these data files in just **one click** from within the **Favourites** Tab in the **Open Data File** module in MTPredictor.



One set up this will make accessing your Exported ShareScope data files very easy indeed.

One word of caution to finish - "if" you wish to export more than one list from ShareScope, please make sure to set up and then keep **completely separate** different folders on your hard drive into which you place the separate data files. For example I have **completely separate** folders on my hard drive for my FTSE100 and FTSE250 files.

Thanks and good trading . . .

Steve Griffiths
 Managing Director and developer of MTPredictor
MTPredictor Ltd.
www.mtpredictor.com

U.S. Government Required Disclaimer - Commodity Futures Trading Commission. Futures and Options trading has large potential rewards, but also large potential risk. You must be aware of the risks and be willing to accept them in order to invest in the futures and options markets. Don't trade with money you can't afford to lose. This is neither a solicitation nor an offer to Buy/Sell futures, stocks or options on the same. No representation is being made that any account will or is likely to achieve profits or losses similar to those discussed on this web site. The past performance of any trading system or methodology is not necessarily indicative of future results

MTPredictor, Isolation Approach & Techniques Curve are trademarks of MTPredictor Ltd. All other trademarks and brands may be the property of their respective owners. © MTPredictor Ltd. 2001 - 2006. All rights reserved.

Trade at your own risk. There is risk of loss when trading speculative markets. This training and education newsletter is for information and educational purposes only and should not be considered trading recommendations. You should seek appropriate advice from your broker, or licensed investment advisor, before taking any action. All trading decisions are your own sole responsibility, and MTPredictor or S. E. Griffiths or A. P. Beckwith cannot be held responsible for any losses that are incurred as a result. Past performance is no guarantee of future results. © MTPredictor - www.MTPredictor.com 2001 - 2006.