



find a trade | assess risk/reward | determine position size | manage the trade

## MTPredictor Help File – RTDataServer (TS8)

Web: [www.mtpredictor.com](http://www.mtpredictor.com)

26 November 2009

In this help file I will cover how to setup the RTDataServer that will enable you to plot real-time data from many external sources, at the moment these include NinjaTrader, TradeStation (TS8) and also from eSignal (via efs).

The idea is that the RTDataServer will sit there, collecting data from your external RT data source, completely independently from MTPredictor v6.5. Then MTPredictor v6.5 can simply call for the data from the RTDataServer and Plot charts as and when required.

The screenshot shows two windows. The top window is 'TradeStation RadarScreen - Page 1' displaying a table of market data. The bottom window is 'MTPredictor Data Server v1.0' showing a list of symbols and their respective data sources.

Symbol	Interval	Last	MTPRT(RS)Data	Net Chg	Net %Chg	Bid	Ask	High	Low	Volume Today
1 ESZ09	3 Min	1106.00	1106.00	16.00	1.47%	1105.75	1106.00	1111.50	1089.00	946,996
2 ESZ09	5 Min	1106.00	1106.00	16.00	1.47%	1105.75	1106.00	1111.50	1089.00	946,996
3 ESZ09	15 Min	1106.00	1106.00	16.00	1.47%	1105.75	1106.00	1111.50	1089.00	946,996
4 ESZ09	60 Min	1106.00	1106.00	16.00	1.47%	1105.75	1106.00	1111.50	1089.00	946,996
5										
6 NGZ09	3 Min	1791.00	1791.00	27.50	1.56%	1790.75	1791.00	1801.75	1762.25	165,001
7 NGZ09	5 Min	1791.00	1791.00	27.50	1.56%	1790.75	1791.00	1801.75	1762.25	165,001
8 NGZ09	15 Min	1791.00	1791.00	27.50	1.56%	1790.75	1791.00	1801.75	1762.25	165,001
9 NGZ09	60 Min	1791.00	1791.00	27.50	1.56%	1790.75	1791.00	1801.75	1762.25	165,001
10										
11 @FDAX	3 Min	5795.0	5796.0	132.0	2.33%	5795.5	5796.0	5827.0	5711.0	116,910
12 @FDAX	5 Min	5795.0	5796.0	132.0	2.33%	5795.5	5796.0	5827.0	5711.0	116,910
13 @FDAX	15 Min	5795.0	5796.0	132.0	2.33%	5795.5	5796.0	5827.0	5711.0	116,910
14 @FDAX	60 Min	5795.0	5796.0	132.0	2.33%	5795.5	5796.0	5827.0	5711.0	116,910
15										

The MTPredictor Data Server v1.0 window shows the following Symbol List:

- @FDAX (TradeStation/MTPDS 15 Minute) (1000)
- @FDAX (TradeStation/MTPDS 3 Minute) (1000)
- @FDAX (TradeStation/MTPDS 5 Minute) (1000)
- @FDAX (TradeStation/MTPDS 60 Minute) (1000)
- ESZ09 (TradeStation/MTPDS 15 Minute) (1000)
- ESZ09 (TradeStation/MTPDS 3 Minute) (1000)
- ESZ09 (TradeStation/MTPDS 5 Minute) (1000)
- ESZ09 (TradeStation/MTPDS 60 Minute) (1000)
- NGZ09 (TradeStation/MTPDS 15 Minute) (1000)
- NGZ09 (TradeStation/MTPDS 3 Minute) (1000)
- NGZ09 (TradeStation/MTPDS 5 Minute) (1000)

Tick Entry: 278075      Tick Exit: 69154

Buttons: Refresh, Close

Copyright © 2001-2009 MTPredictor Limited

This is the same no matter what external RT data source you are using for the RTDataServer.....

OK, let's now look at how to set this up for the different RT data feeds currently supported:

- NinjaTrader,
- TS8
- and eSignal (via efs)

## TradeStation (TS8)

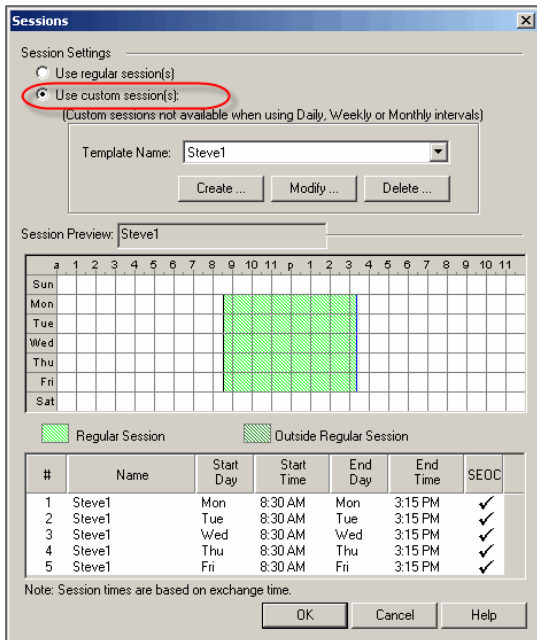
First we need to “run” the **RTDataServer** Installation file on the web site. This installs the **RTDataServer** as well as saves the **MTPData.dll** to a specific Folder on your hard drive.

Then you need to Import the **MTPRT(RS)Data.eld** into TS8.

OK, now we are ready to load this Indicator onto a Radar Screen window.

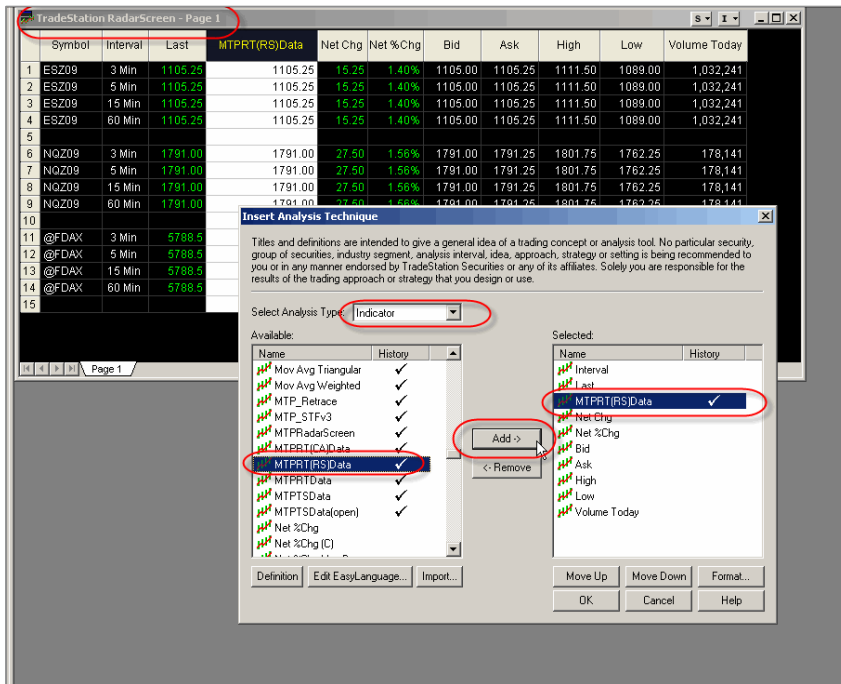
**Please note:** We do have **MTPRT(CA)Data.eld** that can be used on your Charts themselves, but we suggest using Radar Screen, because this is the easiest way to follow multiple time frames all at the same time.

OK, now you need to add in the markets and time frames you wish to follow into Radar Screen. Remembering to set any special “session times” on markets such as the US e-minis (we use 8:30 to 15:15):



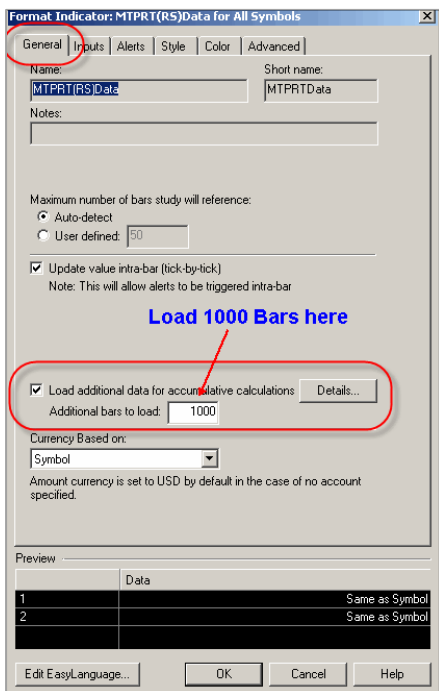
Continued on the next page.....

Then we need to add the MTPRT(RS)Data indicator to Radar Screen. To do this we select to “**Insert**” an Indicator on the Radar Screen window:



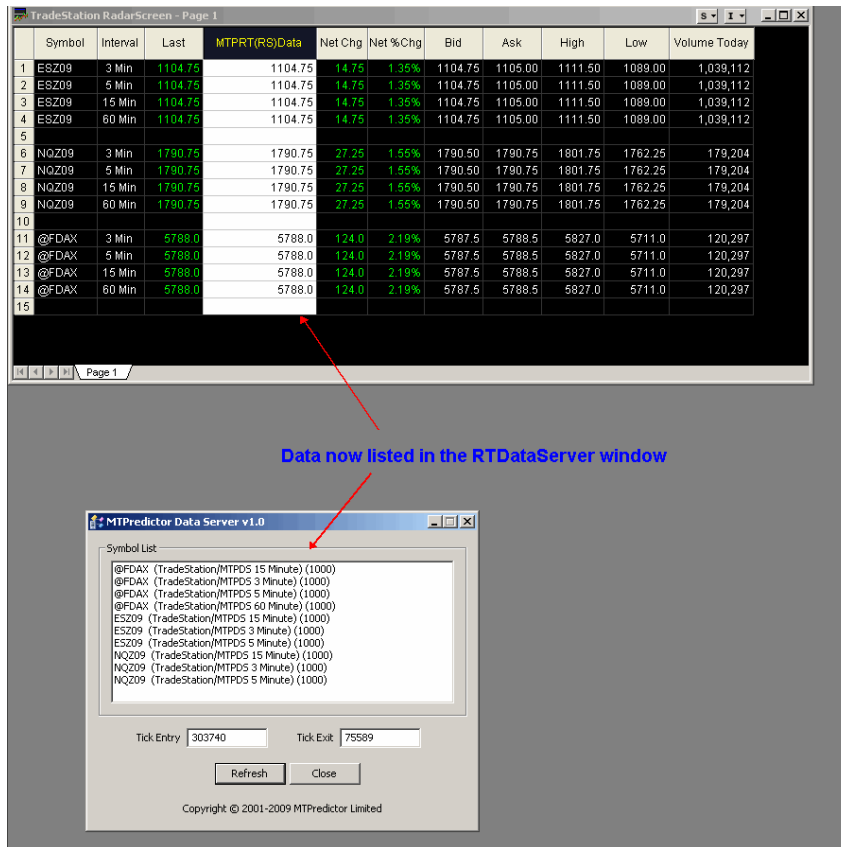
Please remember, that this is for Radar Screen and “not” just on a Quote Screen. A Quote Screen is very different from the full Radar Screen.

Before I get onto MTPredictor I would like to look at some settings you must check. Particularly important is the “**number of additional bars to load**”, this has to be 1000, so we have enough “history to Plot in MTPredictor v6.5:



OK, now it is best to close TS8, then start the MTP RTDataServer, then open TS8. **The order is important here**, please see note in a few pages..... **The RTDataServer always has to be started first** and up and running “before” you open and start TS8.

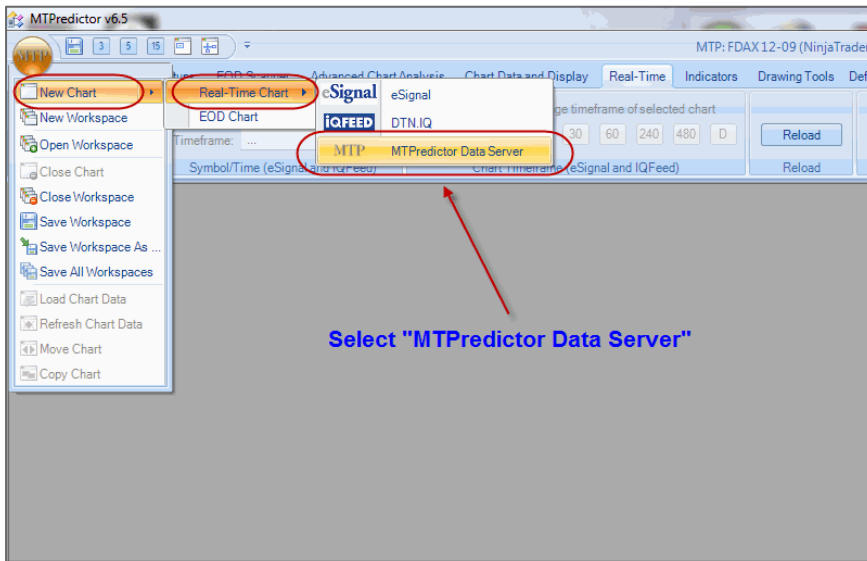
You should now see the Data listed in the RTDataServer window....



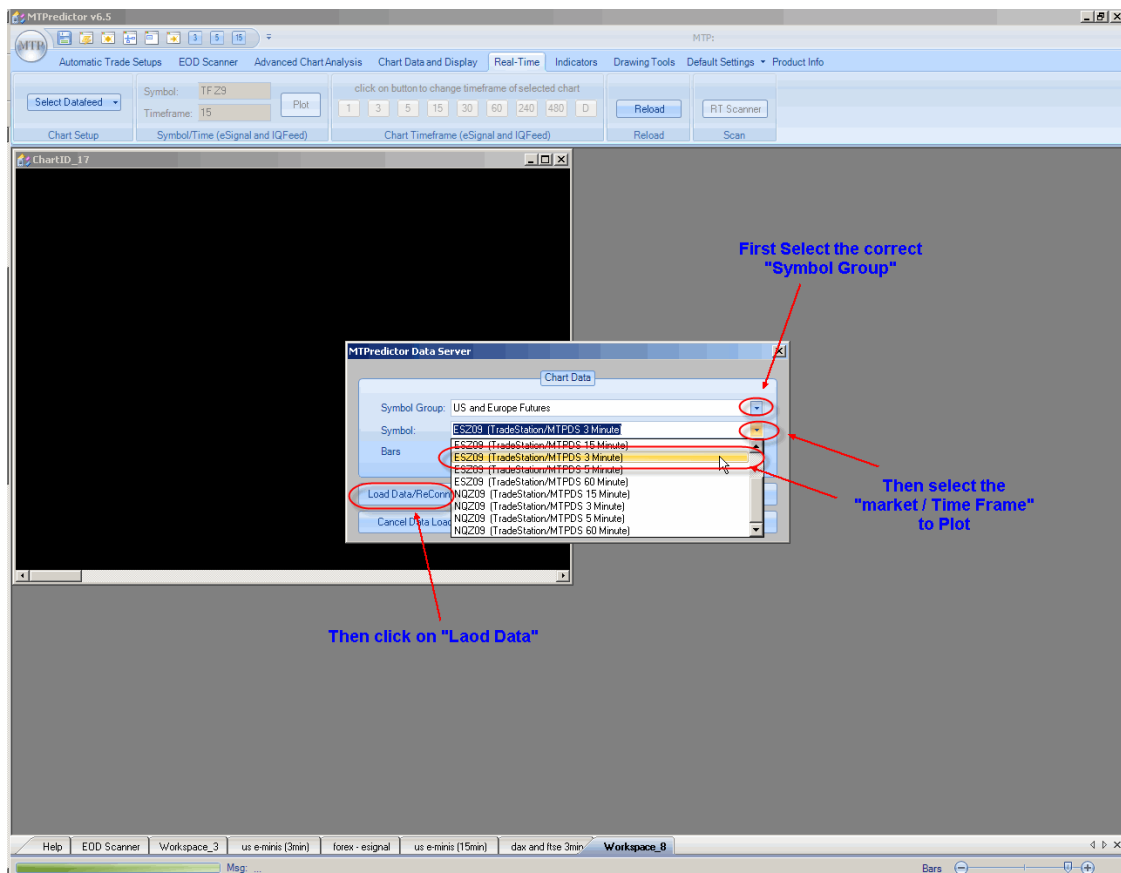
Now you can move onto MTPredictor v6.5 and opening a new chart using this new RTDataServer as the RT data source.....

Continued on the next page.....

Next Open MTPredictor and open a new workspace and select RT data feed, and then select **"MTPredictor Data Server"** as the RT source:



Then load the chart you wish:



Continued on the next page.....

**IMPORTANT**

It is vital that you start things in the correct order each morning, so please follow these steps each day:

1. First Start the MTP RTDataServer (this **has** to be running “before” any RT data source)
2. Then Open TS8,
3. Then Open MTPredictor v6.5

The RTDataServer and data source, in this case TS8, can just be left running collecting data as you use MTPredictor in the normal way.

At the end of the day I would suggest closing MTP, then closing the RTDataServer, then closing your RT data source, in this case TS8.

Thanks and good trading . . .

Steve Griffiths  
Managing Director and developer of MTPredictor  
**MTPredictor Ltd.**  
[www.mtpredictor.com](http://www.mtpredictor.com)

---

U.S. Government Required Disclaimer - Commodity Futures Trading Commission. Futures and Options trading has large potential rewards, but also large potential risk. You must be aware of the risks and be willing to accept them in order to invest in the futures and options markets. Don't trade with money you can't afford to lose. This is neither a solicitation nor an offer to Buy/Sell futures, stocks or options on the same. No representation is being made that any account will or is likely to achieve profits or losses similar to those discussed on this web site. The past performance of any trading system or methodology is not necessarily indicative of future results

**MTPredictor, Isolation Approach & Techniques Curve are trademarks of MTPredictor Ltd. All other trademarks and brands may be the property of their respective owners. © MTPredictor Ltd. 2001 - 2009. All rights reserved.**

---

Trade at your own risk. There is risk of loss when trading speculative markets. This training and education newsletter is for information and educational purposes only and should not be considered trading recommendations. You should seek appropriate advice from your broker, or licensed investment advisor, before taking any action. All trading decisions are your own sole responsibility, and MTPredictor or S. E. Griffiths cannot be held responsible for any losses that are incurred as a result. Past performance is no guarantee of future results. © MTPredictor - [www.MTPredictor.com](http://www.MTPredictor.com) 2001 - 2009.